



The 2025 UK Flight Disruption Report

Insights on delays, cancellations, and passenger rights

Contents

2025 summary	2
Trends 2022 - 2025	3
Disruptions by month	4
Some of the biggest flight disruptions of 2025	6
Disruptions by airport	7
The best and worst routes for 2025	9
European disruption rankings	11
Passenger rights in the UK	13

United Kingdom 2025



142M

Total passengers

940k

Total flights

36M

Disrupted passengers

26%

Disrupted passengers



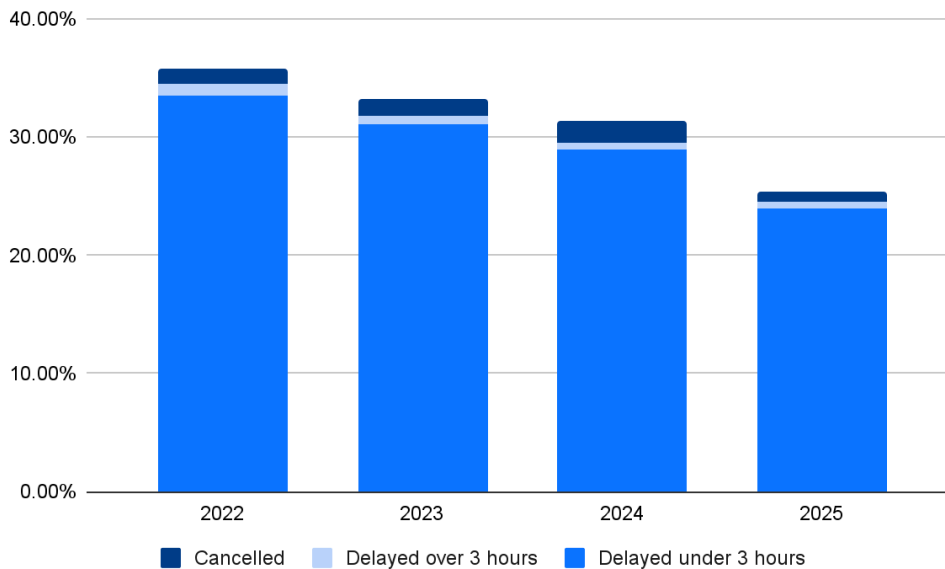
21M

Passengers worldwide could be eligible for up to £520 compensation

Trends

Delays and cancellations are improving, but **26% of UK passengers** still faced a disruption last year

After growing steadily for the past few years, passenger numbers in the UK evened out in 2025, with a **total of 142 million departing passengers**. Flight disruptions continue to decline, with a particular **improvement in long delays**, which now plague just 0.46% of UK passengers.

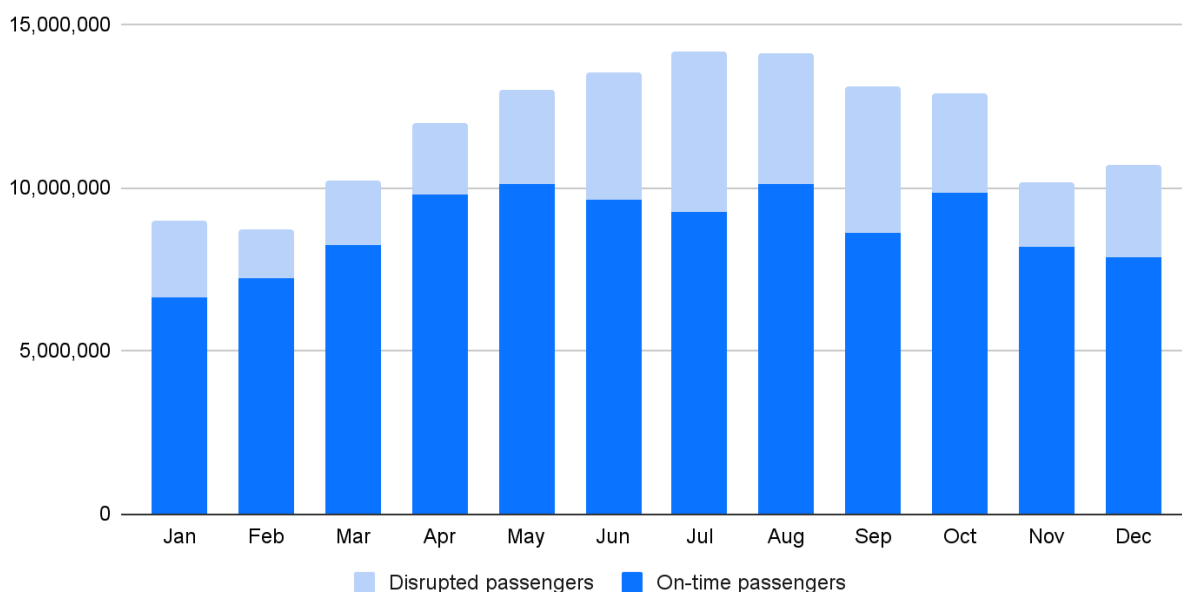


	Total passengers	Delayed under 3 hours	Delayed over 3 hours	Cancelled	Total disrupted
2022	107,000,000	35,900,000	1,000,000	1,420,000	38,320,000
2023	133,000,000	41,300,000	1,010,000	1,870,000	44,180,000
2024	140,000,000	40,500,000	920,000	2,420,000	43,840,000
2025	142,000,000	34,100,000	660,000	1,380,000	36,140,000

Disruptions by month

July 2025 was the worst month for UK passengers

Flight disruptions increased over the busier summer months, but 2025 also saw a lot of disruptions occur over the winter months, possibly an impact of the worse winter weather.



Passengers by month

	Passengers	% disrupted
Jan	9,010,000	26%
Feb	8,740,000	17%
Mar	10,220,000	19%
Apr	11,960,000	18%
May	13,010,000	22%
Jun	13,510,000	29%
Jul	14,190,000	35%
Aug	14,110,000	28%
Sep	13,090,000	34%
Oct	12,890,000	24%
Nov	10,160,000	20%
Dec	10,690,000	27%

Best days to fly

Date	% on-time passengers
Tue, 25 Feb	93%
Wed, 29 Jan	92%
Tue, 14 Jan	92%
Tue, 11 Mar	92%
Wed, 12 Mar	91%

Worst days to fly

Date	% disrupted passengers
Sun, 5 Jan	68%
Sun, 20 Jul	54%
Mon, 21 Jul	52%
Sun, 6 Jul	50%
Mon, 1 Sep	48%

Some of the biggest flight disruptions of 2025

Heathrow Airport Closure was the **biggest flight disruption event** the UK faced in 2025

On March 21st, a large fire at the North Hyde electrical substation near Heathrow led to a power outage that forced the airport to shut for much of the day. This caused disruptions for 99% of passengers and led to the cancellation of 98% of flights, affecting over 96,000 passengers and creating widespread knock-on delays.

An air traffic control failure caused **over 150 flight cancellations and delays**

On 30 July, a radar-related technical fault at the UK's Swanwick air traffic control centre briefly disrupted flights at major airports including Heathrow, causing over 150 cancellations and additional delays and affecting passengers during peak summer travel.

A **cyberattack** affected major European airports

On 20 September, a cyber-attack on Collins Aerospace's Muse check-in and baggage system disrupted operations at Heathrow and other European airports, forcing manual processing and causing widespread flight delays.

Disruptions by airport

Manchester was the UK's most delayed airport, while **Cardiff** had the most cancellations.

The UK's busiest airport is London Heathrow, serving over 42 million passengers in 2025. A respectable 76% of those passengers took off on time, but it's Liverpool who takes the title of the UK's most on-time airport in 2025, with 83% of departures taking off as planned.

Airport	Departing passengers	% on time	% delayed	% cancelled
London Heathrow	42,460,000	76%	23%	1.2%
London Gatwick	19,058,000	73%	26%	0.9%
Manchester	14,330,000	67%	32%	1.0%
London Stansted	13,703,000	73%	27%	0.2%
Edinburgh	7,943,000	73%	26%	0.8%
London Luton	7,523,000	76%	24%	0.6%
Birmingham	6,255,000	70%	29%	1.1%
Bristol	4,983,000	74%	25%	0.6%
Glasgow	3,916,000	79%	20%	0.9%
Belfast	3,191,000	81%	19%	0.4%
Liverpool	2,770,000	83%	17%	0.3%
Newcastle	2,543,000	79%	20%	1.0%
Leeds/Bradford	2,144,000	76%	24%	0.6%
London City	2,073,000	80%	18%	1.7%
East Midlands	1,728,000	79%	20%	0.7%
Belfast City	1,268,000	80%	17%	3.0%

Aberdeen	1,200,000	82%	16%	2.6%
Bournemouth	633,000	70%	29%	0.7%
Inverness	435,000	73%	25%	1.3%
Cardiff	351,000	74%	23%	3.2%
Isle of Man	350,000	76%	23%	1.1%
London Southend	314,000	81%	18%	1.1%
Prestwick	290,000	79%	21%	0.1%
Newquay	209,000	71%	27%	2.4%

The best and worst routes for 2025

Manchester to Cairo is the UK's most delayed flight: **77%** of passengers didn't take off on time.

10 most on-time routes in 2025

On-time routes	Total passengers	% on time
London Heathrow (LHR) to Beijing Daxing (PKX)	51,000	95%
Aberdeen (ABZ) to Stavanger (SVG)	75,000	95%
Aberdeen (ABZ) to Bergen (BGO)	47,000	94%
London Southend (SEN) to Malaga (AGP)	36,000	92%
London Heathrow (LHR) to Guangzhou (CAN)	74,000	92%
Manchester (MAN) to Shanghai Pudong (PVG)	46,000	92%
Glasgow (GLA) to Birmingham (BHX)	86,000	92%
Edinburgh (EDI) to Istanbul Havalimani (IST)	87,000	92%
Manchester (MAN) to Atlanta (ATL)	68,000	92%
Liverpool (LPL) to Malta (MLA)	37,000	91%

5 most delayed routes

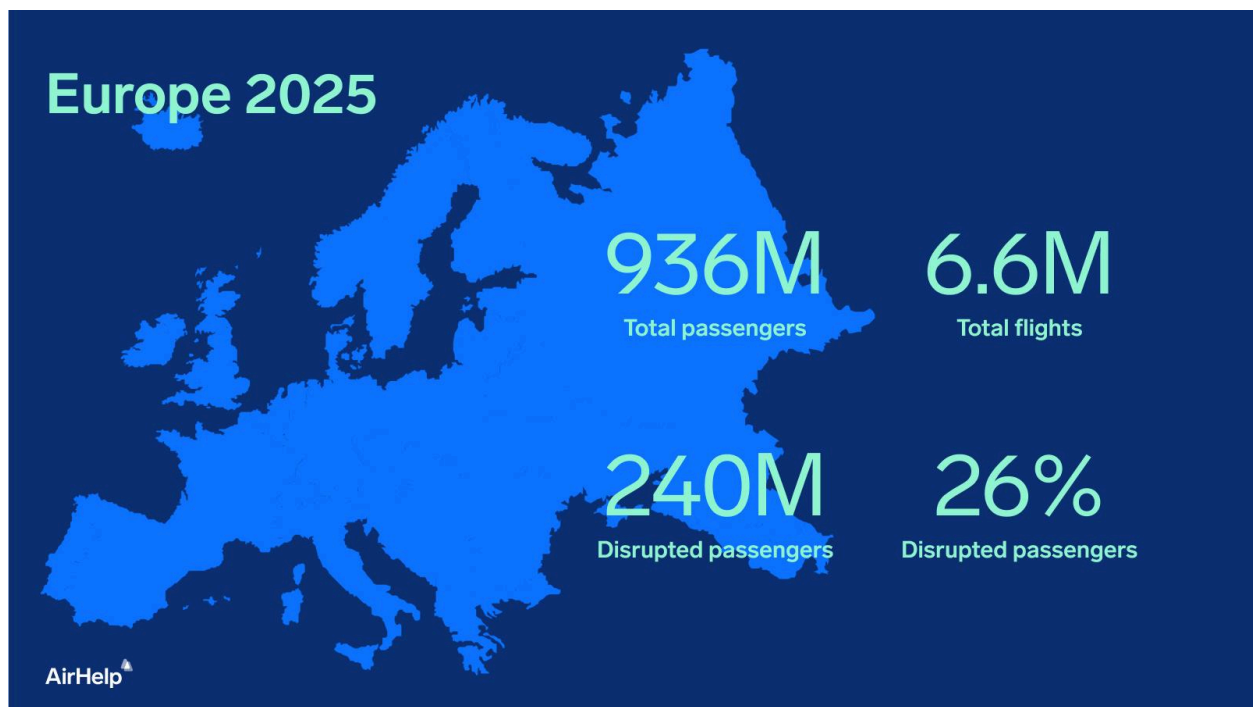
Delayed routes	Total passengers	% delayed
Manchester (MAN) to Cairo (CAI)	49,000	79%
London Heathrow (LHR) to Kigali (KGL)	66,000	69%
Birmingham (BHX) to Larnaca (LCA)	46,000	64%
Manchester (MAN) to Milas–Bodrum (BJV)	34,000	64%
Birmingham (BHX) to Rhodes (RHO)	65,000	61%

5 most cancelled routes

Cancelled routes	Total passengers	% cancelled
London Gatwick (LGW) to Goa Manohar (GOX)	26,000	24%
London Gatwick (LGW) to Amritsar (ATQ)	28,000	20%
London Gatwick (LGW) to Ahmedabad (AMD)	47,000	18%
London Heathrow (LHR) to Montego Bay (MBJ)	40,000	11%
London Luton (LTN) to Tel Aviv (TLV)	145,000	10%

Disruption rankings

The UK ranks **20th** for on-time flights in Europe, Scandinavian nations take the top spots



	Country	Departing passengers	% disrupted
1	Norway	29,920,000	15%
2	Sweden	17,270,000	16%
3	Estonia	1,740,000	18%
4	Denmark	18,640,000	18%
5	Lithuania	3,080,000	19%
6	Iceland	4,170,000	19%
7	Slovakia	1,120,000	21%
8	Austria	18,360,000	21%
9	Poland	27,270,000	21%
10	Hungary	8,450,000	21%
11	Latvia	3,600,000	22%
12	Ireland	21,170,000	22%
13	Slovenia	730,000	23%
14	Finland	11,380,000	23%
15	Romania	12,230,000	24%
16	Spain	139,880,000	25%
17	Croatia	7,150,000	25%
18	Czech Republic	7,710,000	25%
19	United Kingdom	141,570,000	26%
20	Germany	106,530,000	26%
21	Bulgaria	5,170,000	26%
22	Luxembourg	2,380,000	27%
23	Italy	102,700,000	27%
24	Belgium	18,000,000	28%
25	Switzerland	24,900,000	28%
26	Netherlands	36,660,000	29%
27	Malta	4,770,000	29%
28	France	90,130,000	30%
29	Greece	36,510,000	33%
30	Portugal	32,520,000	36%

You could get up to **£520 compensation** for flights to, from, and within the UK

 **Delays**

Over 3 hours

 **Denied boarding**

For overbooking

 **Cancellations**

Less than 14 days before

 **Missed connections**

Causing 3-hour delay upon arrival

 **No compensation** when a disruption is caused by extraordinary circumstances.

Extra care you're entitled to

 **Alternative flight or full refund**

In all cases of denied boarding, cancellation, or missed connection.

 **Accommodation + transfer for overnight delays** **Passengers must be informed of their rights** **Two phone calls or emails** **Food & drink after a few hours**